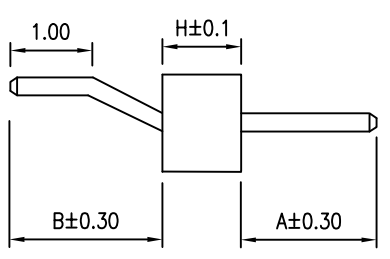
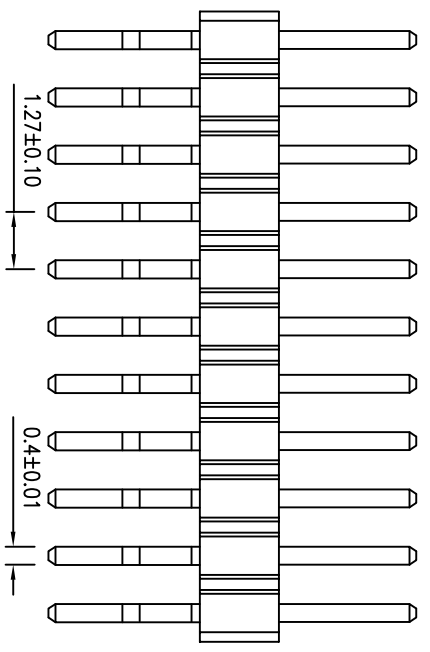
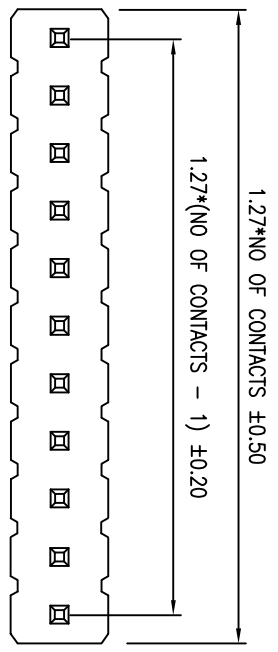


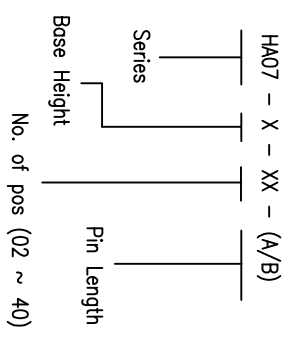
REV	ECN NO.	APP.	DATE
A	NEW DESIGN		



SPECIFICATION

- * Current Rating:
1 A
- * Withstanding Voltage:
300 VAC (1 min.)
- * Insulation Resistance:
1000 Megohms MIN.
- * Contact Resistance:
30 Milliohms MAX.
- * Operating Temperature:
-40°C to +105°C

ORDER INFORMATION



MATERIAL

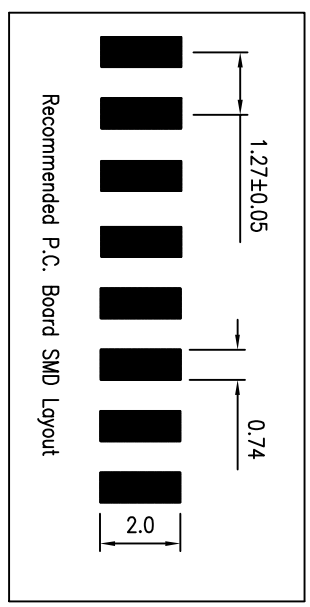
- * Contact: Brass
0.40mm square post
- * Insulator: PA6T & 30% G.F.
- * Plating: All Gold

Base Height

Base	H
1	1.50
2	2.00
3	2.50

Pin Chart

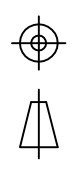
Pin	A	B
1	3.00	3.20
2		
3		
4		



(주) 신화테크

SHINHWHA TECH CO.,LTD
TEL : 031-451-9441 FAX : 031-451-9444

0.0±	SCALE:	TITLE:	PART NO:
0.00±	UNIT: MM	1.27MM Pin Header Single Row	APP BY:
0.000±		Right Angle SMD	CHK BY:



MATL: PA6T + 30% GF	DR BY:
DWG. NO. HA07	